



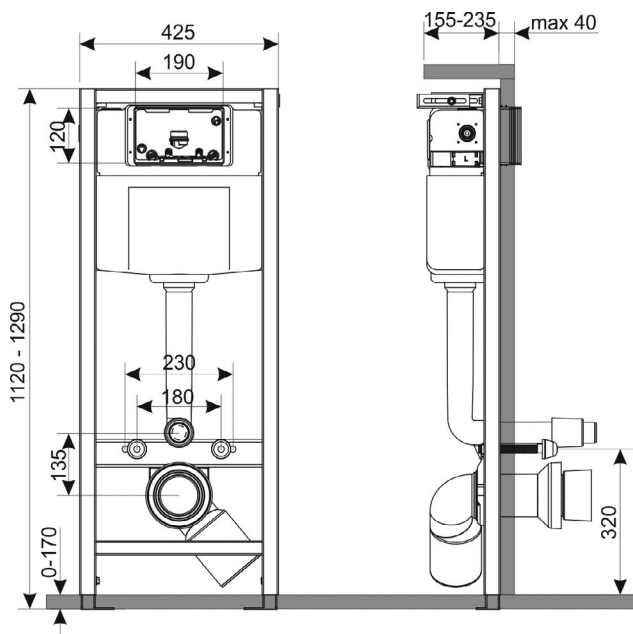
MAIN FEATURES

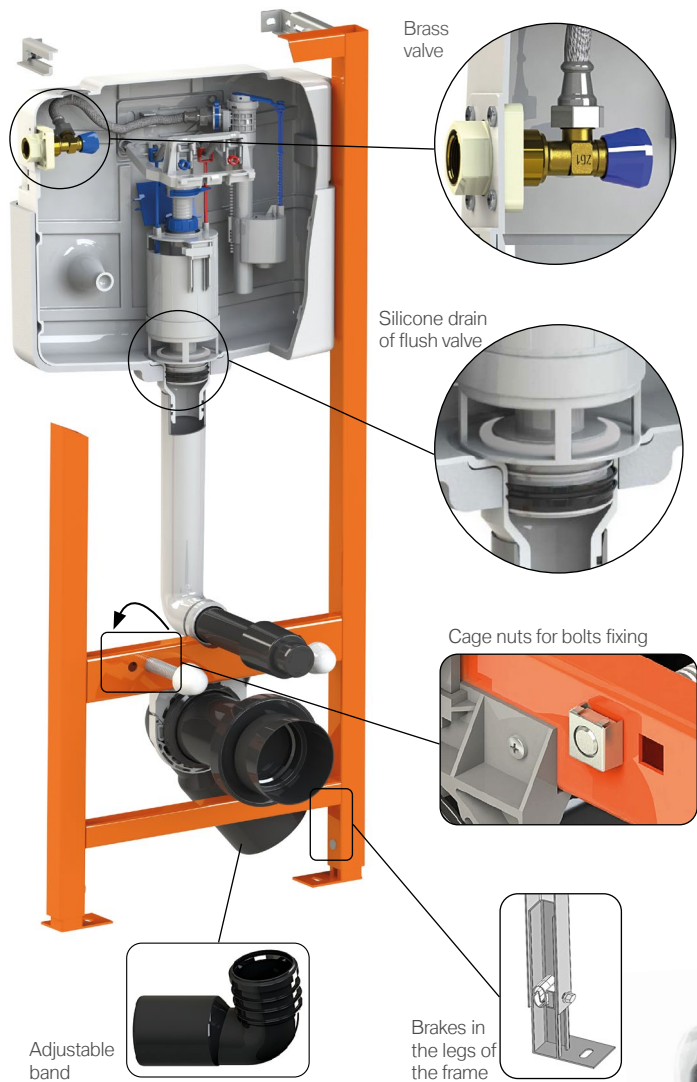
- Frame width 425 mm
- Designed for a hanging bowl with a hole spacing of 18 or 23 cm
- Adjustable flush 3/6 l
- Only 4 fixing points
- Possibility of corner mounting
- Monolithic tank made in blow technology
- Tank insulation to prevent wall retting
- Brass connection with water connection on the left and above
- Brass shut-off valve
- Ultra-quiet filling valve (only 22 dB)
- Replaceable drain valve seat
- Adjustable bend DN 90/110
- Brakes in the legs of the frame to facilitate leveling
- All connection components included

Symbol: 350/ZPW/425-00-S0



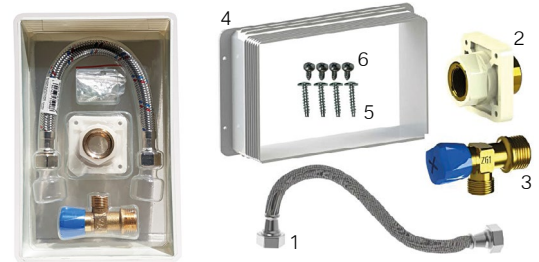
adjustable height	1120 - 1290 mm
width	425 mm
adjustable depth	155 - 235 mm
weight	12 kg
distance between bolts	18 / 23 cm
ultra silent valves	yes
damping pad	no
brass cut-off valve	yes
type of cistern	monolith blow technology





Internal accessories

- 1 - 3/8" x 3/8" connection hose
- 2 - installation connector
- 3 - 1/2" x 3/8" shut-off valve
- 4 - mounting tunnel
- 5 - connector screws
- 6 - tunnel screws



Frame fittings

- 1 - adjustable wall brackets
- 2 - M12 bolts
- 3 - M12 bolt sleeve
- 4 - M12 nuts
- 5 - M8 screws
- 6 - M8 nuts
- 7 - M8 washers
- 8 - expansion bolts
- 9 - dowel screws
- 10 - dowel washers

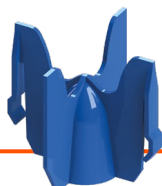
Connection accessories of hung toilet

- 1 - connector DN90 (176 mm) with drainage seal
- 2 - connector DN45 (176 mm)
- 3 - 4-lip seal
- 4 - security plug Ø 90
- 5 - plug of inlet pipe
- 6 - bushings bolts
- 7 - covers of bushings bolts
- 8 - nuts M12
- 9 - flat washers M12



Recommended additional accessories

Choke splash preventing



Refreshing cube dispenser
Water Fresh

